

Cynomolgus/Rhesus macaque CD27/TNFRSF7 Protein

Cat. No. CD2-CM227

Description

Source	Recombinant Cynomolgus/Rhesus macaque CD27/TNFRSF7 Protein is expressed from HEK293 with hFc tag at the C-Terminus. It contains Ala20-Arg191.
Accession	XP_005569963.1(Cynomolgus) / F7BYS2(Rhesus macaque)
Molecular Weight	The protein has a predicted MW of 46.5 kDa. Due to glycosylation, the protein migrates to 60-70 kDa based on Bis-Tris PAGE result.
Endotoxin	Less than 1EU per µg by the LAL method.
Purity	> 95% as determined by Bis-Tris PAGE > 95% as determined by HPLC

Formulation and Storage

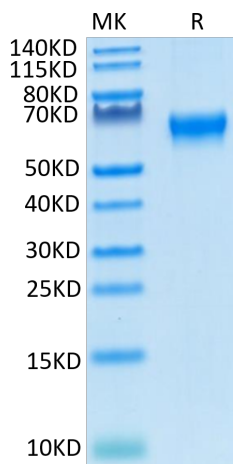
Formulation	Lyophilized from 0.22µm filtered solution in PBS (pH 7.4). Normally 8% trehalose is added as protectant before lyophilization.
Reconstitution	Centrifuge the tube before opening. Reconstituting to a concentration more than 100 µg/ml is recommended. Dissolve the lyophilized protein in distilled water.
Storage	-20 to -80°C for 12 months as supplied from date of receipt. -80°C for 3 months after reconstitution. Recommend to aliquot the protein into smaller quantities for optimal storage. Please minimize freeze-thaw cycles.

Background

CD27, also known as TNFRSF7, is an approximately 55 kDa transmembrane protein in the TNF receptor superfamily. It functions as a costimulatory molecule that supports lymphocyte activation and survival. It binds to ligand CD70, and plays a key role in regulating B-cell activation and immunoglobulin synthesis.

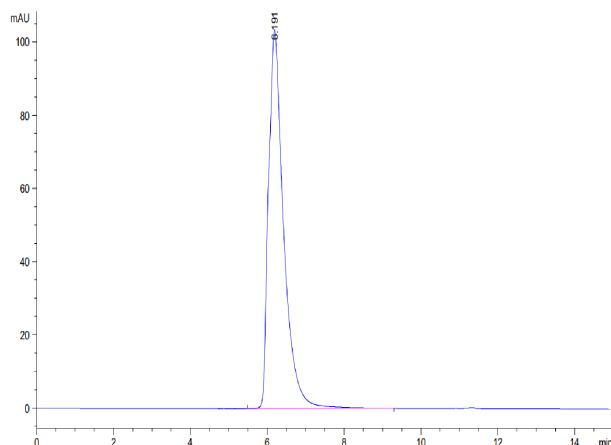
Assay Data

Bis-Tris PAGE



Cynomolgus/Rhesus macaque CD27 on Bis-Tris PAGE under reduced condition. The purity is greater than 95%.

SEC-HPLC



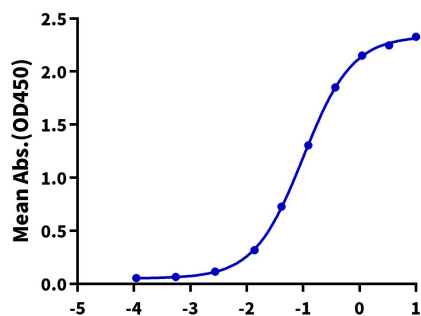
The purity of Cynomolgus/Rhesus macaque CD27 is greater than 95% as determined by SEC-HPLC.

Assay Data

ELISA Data

Cynomolgus/Rhesus macaque CD27, hFc Tag ELISA

0.2µg Cynomolgus CD27 Ligand, His Tag Per Well



Immobilized Cynomolgus CD27 Ligand, His Tag at 2µg/ml (100µl/well) on the plate. Dose response curve for Cynomolgus/Rhesus macaque CD27, hFc Tag with the EC50 of 100.2ng/ml determined by ELISA (QC Test).

Log Cynomolgus/Rhesus macaque CD27, hFc Tag Conc. (µg/ml)